



# Catalogue 2025

<http://www.trucorp.com>



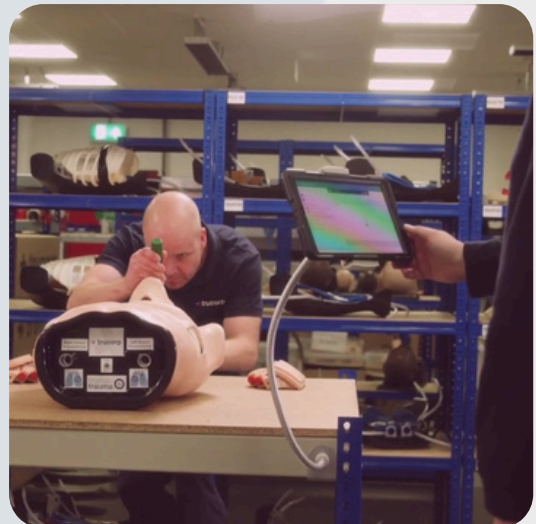
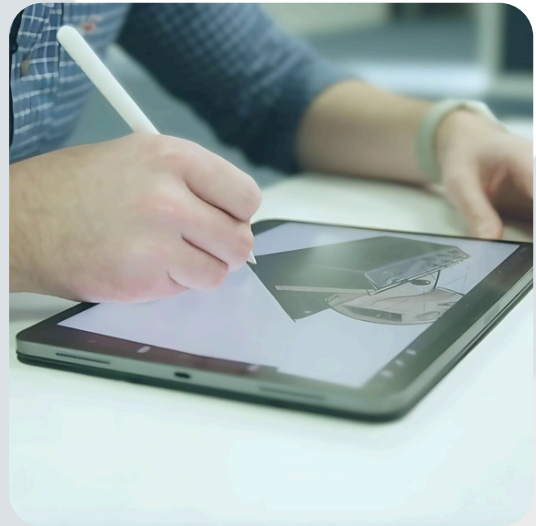
# Vision statement

**We are committed to advancing healthcare training globally, by setting the standard in medical simulation, driving innovation and inspiring excellence.**

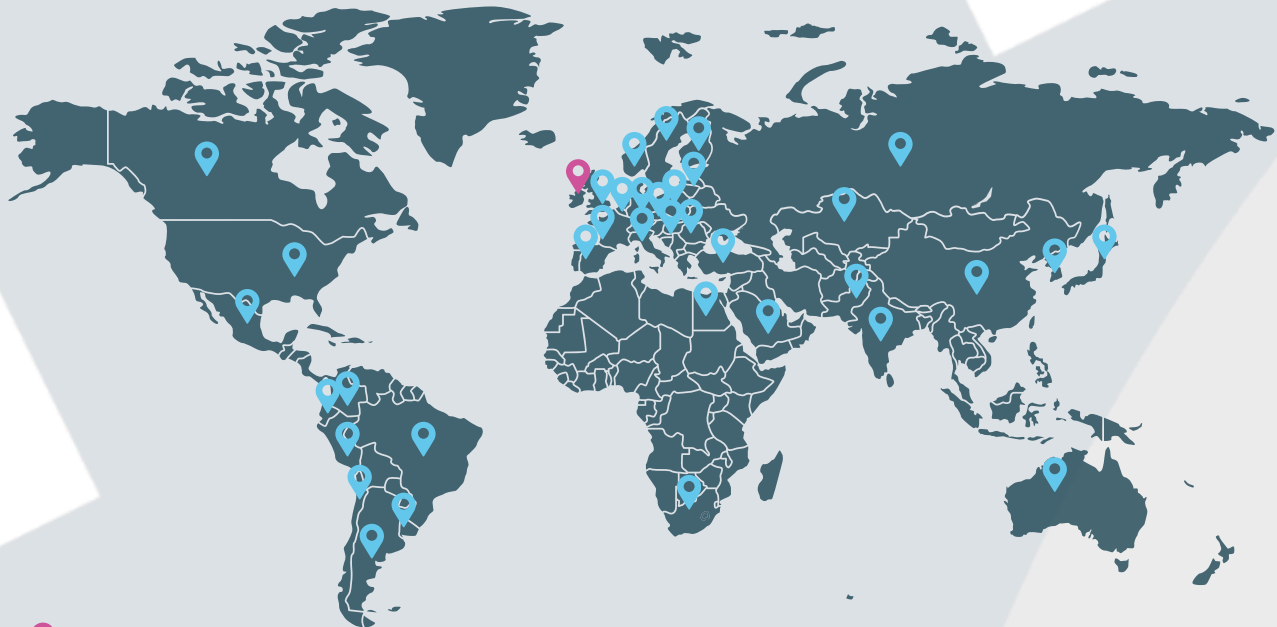
Founded in 2002 by two anaesthetists in the Department of Anaesthesia at Queen's University Belfast, TruCorp was born from the need for more realistic training manikins. Since then, we have become a leading name in the medical simulation industry, with over 20 years of experience. We are committed to developing anatomically accurate products that reflect medical best practices, aiming to improve training efficiency and ultimately save lives.



TruCorp has engineered a wide variety of training solutions, including airway management, trauma training, ultrasound, and pediatric procedural skills manikins, along with an array of simulation apps. Our innovative AirSim® X Airway—designed using CT DICOM data from real patients—delivers unmatched realism and durability.

As we continue to grow through ongoing innovation and refinement, TruCorp remains proud to support healthcare professionals worldwide in advancing their medical skills and improving patient safety.



# Where to find us?



-  TruCorp HQ
-  Distribution Partners

Our commitment to quality and innovation has made TruCorp a trusted name in the medical simulation industry. Each of our products is designed with meticulous attention to detail, ensuring that healthcare professionals have the most realistic and effective training tools available.

We believe in fostering strong relationships with our distributors, providing them with comprehensive support and resources to ensure the successful delivery and implementation of our products. Our global reach is a testament to the reliability and excellence that TruCorp stands for.

Looking ahead, we are excited to continue expanding our presence worldwide, bringing our training solutions to even more healthcare institutions. Together with our partners, we are dedicated to enhancing patient care and safety through superior training and education.

# Director's message



*"At TruCorp, our mission is to advance medical best practise through the development of realistic, high-quality simulation tools. Our focus isn't just on creating manikins, but on replicating the urgency and complexity medical professionals face in real-life emergencies. By listening closely to our customers, we design products that allow healthcare professionals to practice critical skills under pressure, ensuring they are well-prepared for real-world challenges."*

*We're driven by the belief that our innovations in medical simulation will elevate healthcare training globally. Our products are engineered for lifelike scenarios, giving users the chance to learn and grow. Ultimately, our goal is to provide healthcare professionals with the confidence and skills they need to offer the highest standard of care.*

*As we look to the future, we're committed to making TruCorp the global benchmark in medical simulation, transforming healthcare training one manikin and one professional at a time."*

**Ryan Colhoun, Co-owner and Product Director at TruCorp**

## Our mission

At TruCorp, our mission is to equip healthcare professionals with the most advanced, reliable, and innovative medical training solutions. We strive to improve patient outcomes by delivering high-quality simulation products and services that enhance skill development, inspire confidence and support continuous learning, resulting in more lives saved.

#Simulation Excellence

#Lifesaving Confidence



# Why choose TruCorp products?

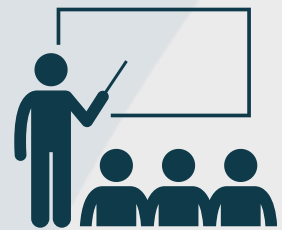
## Unmatched realism for effective training

TruCorp manikins are designed with true-to-life anatomy, using CT DICOM data from real adults, children, and infants.



## Designed for classroom environment

TruCorp products are rigorously tested to withstand repeated use, ensuring that quality and realism are never compromised. Backed by TruCorp's ISO 9001 certification for quality management systems and our enhanced comprehensive warranty (up to 3 years depending on product category), our simulators deliver long-term value and complete peace of mind. This makes TruCorp a smart, reliable investment for medical educators.



## Comprehensive product range for multi-specialty training

TruCorp provides a wide array of manikins for airway management, trauma training, pediatric skills, ultrasound and simulation apps. This versatility meets various training needs in one place.



## Trusted by healthcare professionals worldwide

With over 20 years of experience in the medical simulation industry worldwide, TruCorp's products have a proven track record of enhancing skills, reducing errors, and improving patient outcomes. Certified to ISO 27001 standards, TruCorp upholds stringent information security management practices, reinforcing trust and reliability in our training solutions for healthcare professionals.



## Commitment to innovation and sustainability

TruCorp leads the way with eco-conscious production practices and a commitment to continuous improvement, driven by user feedback. Certified to ISO 14001 standards, we prioritize sustainable solutions while advancing medical simulation technology to meet the evolving needs of healthcare training.



# Table of Contents

## 01

### New

<u>Smart Airway Adult</u>	7
<u>TruCVC</u>	7
<u>TruBaby X Lite</u>	8
<u>TruInfant IO Leg</u>	8
<u>TruInfant IV Arm</u>	8

## 02

### Airway Management

<u>Adult</u>	12
<u>Difficult Airway</u>	15
<u>Pediatric</u>	16

## 03

### Infant Task Trainers

<u>TruBaby X</u>	19
<u>TruBaby X Lite</u>	19
<u>TruInfant IV Arm</u>	20
<u>TruInfant IO Leg</u>	20

## 04

### Trauma

<u>Truman Trauma Adult</u>	21
<u>TruTourniquet</u>	22
<u>TruWound</u>	22

## 05

### Ultrasound Simulators

<u>TruCVC</u>	23
<u>TruIV Block</u>	24
<u>TruNerve Block</u>	24
<u>TruPICC Block</u>	24

## 06

### Simulation Apps

<u>TruAED</u>	25
<u>TruMonitor</u>	25
<u>TruVent</u>	25

## 07

### Coming Soon

<u>TruJunctional</u>	26
<u>TruMan Trauma Adult</u>	26
<u>TruALS</u>	27

## 08

### Comparison Tables

<u>Adult Procedural Abilities</u>	28
<u>Pediatric Procedural Abilities</u>	28

# Smart Airway

The Smart Airway Adult is a realistic airway trainer with sensor-driven feedback for tracking key metrics like jaw thrust and cricoid pressure. It offers customizable sessions, real-time feedback, and detailed performance reports, enhancing hands-on training for airway management techniques.

**Page 9**



The TruCVC is an adult upper torso trainer for ultrasound-guided central venous catheter insertion. It features realistic anatomy and self-healing TruUltra material for repeated use. Ideal for needle insertion, wire manipulation, and catheter placement, it's quick to set up and ultrasound-compatible.

## TruCVC

**Page 23**

**truultra** 



## TruBaby X Lite



The TruBaby X Lite is a highly realistic 5-month-old infant manikin, designed with a focus on nursing skills. It allows for practicing airway management, peripheral venous cannulation, urethral catheterization, IO tibia, and CPR. Lightweight and portable, it's ideal for hands-on pediatric nursing and medical training.

[Page 19](#)

## TruInfant IV Arm

The TruInfant IV Arm is a lifelike task trainer designed for practicing peripheral IV cannulation in the hand and arm of a 5-month-old infant. It offers realistic resistance, blood flashback, and multiple injection sites. Easy to set up and maintain, it's ideal for repetitive pediatric IV training.

[Page 20](#)



## TruInfant IO Leg



The TruInfant IO Leg is a lifelike task trainer designed for practicing essential pediatric skills on a 5-month-old, including IO tibia needle placement, IV cannulation in the foot, and intramuscular injections. It offers realistic resistance and anatomical accuracy, ideal for repetitive training. Easy to set up and maintain.

[Page 20](#)

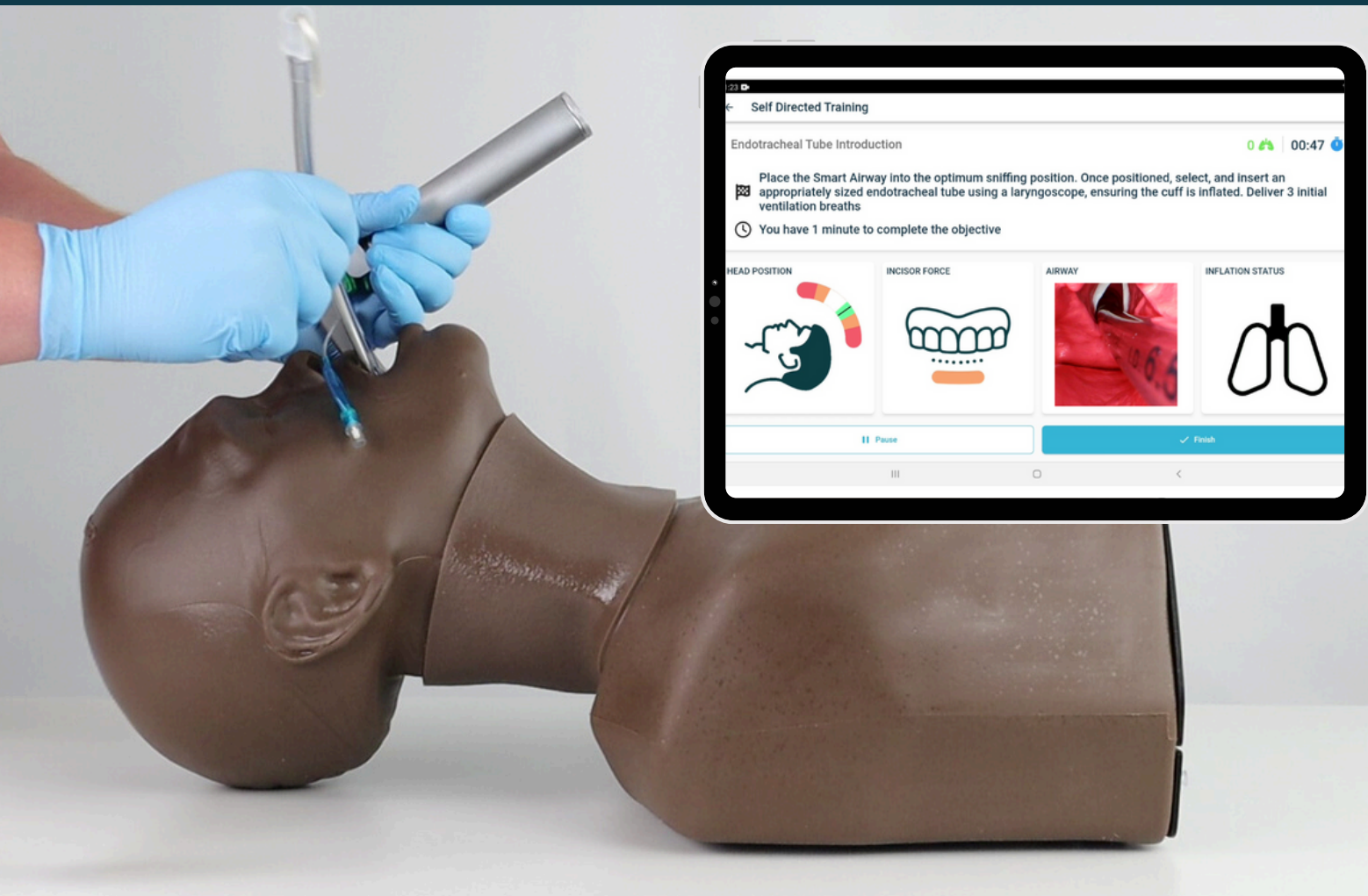


# Smart Airway

Available in Adult, Child and Baby manikins

Perfect for beginners  
to advanced users

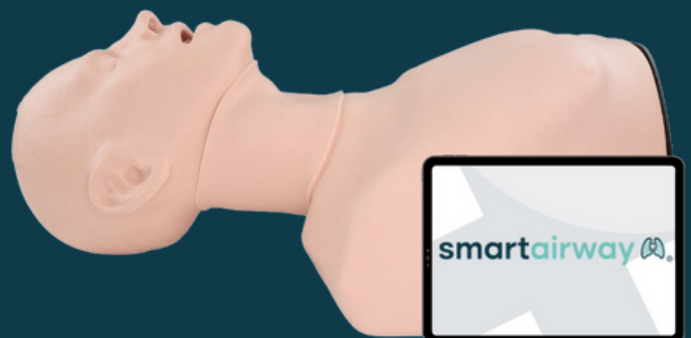
The Smart Airway range is an airway management training solution complemented by a customized training application. Specifically designed to promote independent learning through hands-on practice and self-directed study modes. It validates student performance and offers both quantitative and qualitative feedback for improvement through instructor-led assessments. Ideal for dynamic classroom settings, it features a quick setup and minimal downtime between users. Additionally, it provides tailored assessments and feedback based on individual experience levels.



FIND OUT  
MORE



Click Here





# Smart Airway App Features



## Practice Mode

- Real-time feedback on techniques (incisor force, cricoid pressure, head position, jaw thrust, BVM).
- Visualizations of lung volumes through bar graphs and pressure curves.
- Feedback on ventilation rate and volume, with pathways for refinement based on best practice adherence.

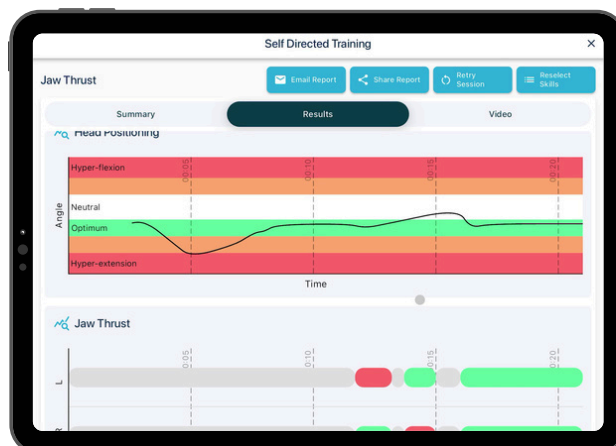
## Self-Directed Training

[Click Here](#)

- Provides video tutorials, background information, and feedback on performance.
- Allows students to practice skills in a self-directed training session.
- Customizable focus skills with quantitative feedback and graded marks.

## Instructor-Led Assessment

- Scenarios and assessment criteria are adjustable based on user experience.
- Pre-theory knowledge questions are included and marked.
- Debrief video, quantitative feedback, and improvement suggestions are given post-assessment.
- Certificate of completion and summary of results provided at the end.



# Smart Airway Manikin Features



The Smart Airway range offers realistic airway anatomy based on CT data, with features like tongue edema for challenging scenarios and identifiable anatomical landmarks.

Available in Adult, Child (6 years) , and Baby (5 months) models, each is designed using CT DICOM data, providing realistic training scenarios. The manikins simulate chest rise, support over 80,000 intubation cycles, and are designed for quick, effective setup in airway management training.

They are ideal for practicing procedures such as double nasotracheal intubation, BVM ventilation, direct and video laryngoscopy, and needle or surgical cricothyroidotomy.

Advanced sensors provide real-time feedback on key procedures, while an app offers guided tutorials, customizable sessions, and performance tracking.

The durable and portable design ensures hands-on experience, improved procedural accuracy, and versatility for different training environments.

## **Smart Airway Adult**

Product Code: SAA10001



## **Smart Airway Child**

Product Code: SAC10002



## **Smart Airway Baby**

Product Code: SAB10003





## AirSim

Product Code: AA11100



The AirSim model is perfect for students beginning their airway training. It focuses on upper airway management and features an anatomically accurate nasal cavity and an inflatable tongue bulb.

Learners can practice fundamental skills such as nasotracheal intubation, BVM ventilation, and supraglottic device insertion. The user feedback system, including visualization of stomach inflation and lung expansion, helps students identify areas for improvement, building a strong foundation in airway management.



[Click Here](#)

AirSim Bronchi is tailored for beginner airway management, focusing on bronchoscopy. It features an anatomically correct nasal cavity and bronchi down to the fourth generation.

Students can practice diagnostic bronchoscopy, lung isolation techniques, and awake fiber optic examinations. The visualization of stomach inflation and lung expansion offers immediate feedback, allowing students to refine their skills in handling complex bronchoscopic interventions.

## AirSim Bronchi

Product Code: AA51100

*"The AirSim® Bronchi simulator can be used to effectively teach and evaluate residents on correctly identifying and repositioning a malpositioned DLT."*

[Hierlmeier B, et al. \(2022\)](#)



[Click Here](#)



**Not sure which manikin is the right fit for you?**

**Check out adult and pediatric comparison tables at the end of this catalogue.**

[Click here!](#)



The AirSim Advance X is designed for intermediate students ready to expand their skills in airway management.

It features an anatomically correct nasal cavity and an inflatable tongue bulb to simulate challenges like tongue edema. By practicing endotracheal nasotracheal intubation, BVM ventilation, NG tube insertion, and direct/video laryngoscopy, students gain comprehensive hands-on experience.

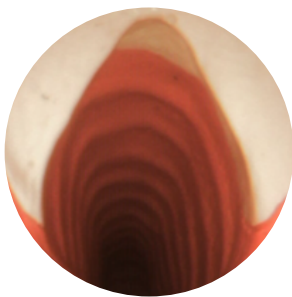
Immediate feedback through the visualization of stomach inflation and lung expansion helps refine techniques and boost confidence.

## **AirSim Advance X**

Product Code: AA91100X



[Click Here](#)



## **AirSim Advance Bronchi X**

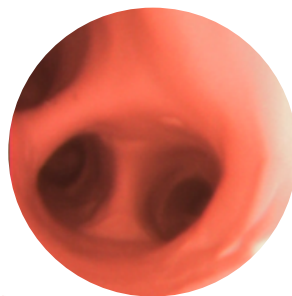
Product Code: AA95100X

Designed for students advancing into more intermediate respiratory management, the AirSim Advance Bronchi X extends its capabilities to include anatomically correct bronchi down to the fourth generation.

This model is ideal for practicing advanced techniques such as bronchoscopy, lung isolation, and suctioning, in addition to standard airway procedures. The detailed simulation and immediate visual feedback enable students to enhance their proficiency in both routine and complex airway scenarios.



[Click Here](#)



*"Training new fellows on the bronchoscopy simulator leads to more rapid acquisition of bronchoscopy expertise compared with conventional training methods."*

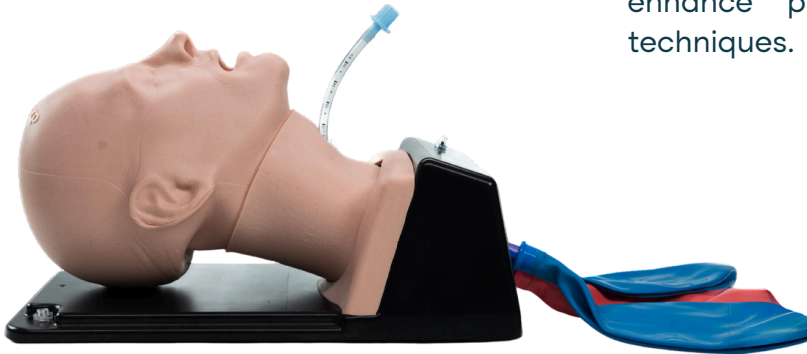
[Ost, D., DeRosiers, et al. \(2001\).](#)

## AirSim Combo X

Product Code: CTC91100X

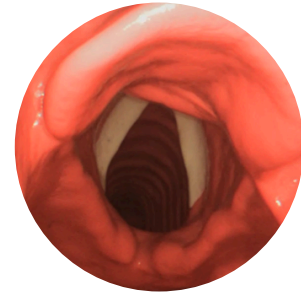


[Click Here](#)



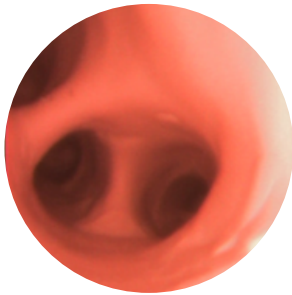
Perfect for students looking to master a broader range of airway skills, including oral/nasal intubation, BVM ventilation, cricothyroidotomy, and tracheostomy.

Its realistic anatomy and user feedback enhance proficiency in various clinical techniques.



The most versatile and advanced model, combining upper and lower airway management with bronchi features down to the fourth generation.

Ideal for mastering a wide range of skills, including intubation, cricothyroidotomy, and diagnostic bronchoscopy, ensuring well-rounded expertise.



## AirSim Combo Bronchi X

Product Code: CTC95100X



[Click Here](#)



## TruCric

Product Code: TCRIC1



Great for those learning front-of-neck access (FONA) techniques, including needle and surgical cricothyroidotomy.

Its realistic larynx with palpable cricoid landmarks allows students to practice essential emergency procedures like air jet ventilation confidently.



[Click Here](#)

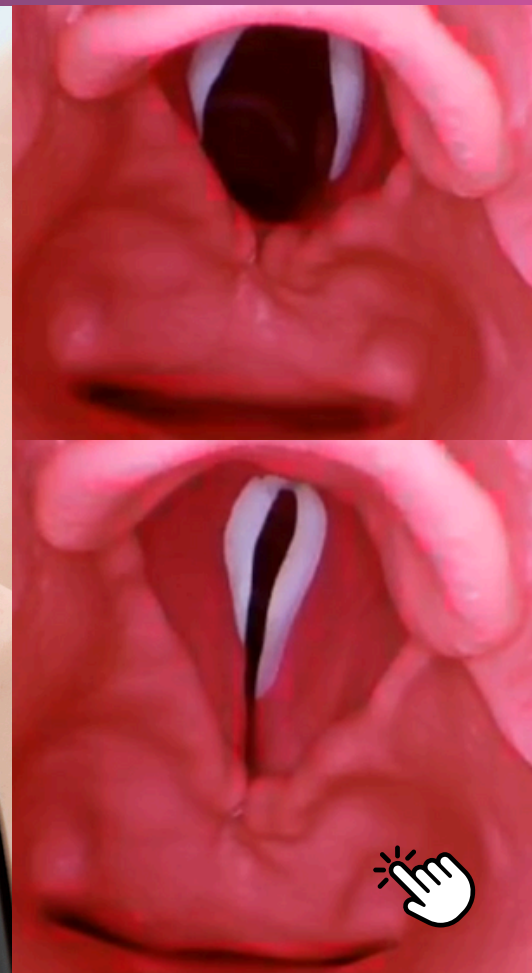
Not sure which manikin is the right fit for you?

Check out adult and pediatric comparison tables at the end of this catalogue.

[Click here!](#)



[Click Here](#)



The AirSim Difficult Airway range simulates various challenging scenarios in line with the Difficult Airway Society (DAS) guidelines. Both models support front-of-neck techniques like needle and surgical cricothyrotomy.

The AirSim Difficult Airway with Bronchi adds anatomically correct bronchi for training in bronchoscopy, lung suctioning, and isolation. This range helps students work through the DAS algorithm, enhancing their skills in managing complex airways, with the bronchial model offering comprehensive training for advanced procedures.

#### **Difficult Features:**

- Tongue edema
- Laryngospasm
- Displaced larynx
- Trismus
- Receding/protruding mandible
- Limited neck movement

#### **AirSim Difficult Airway**

Product Code: DA91100



#### **AirSim Difficult Airway with Bronchi**

Product Code: DA95100



*\*Extreme Difficult Airway* available upon request, the internal airway has an enlarged tongue, swollen posterior cartilages and an elongated epiglottis to provide a very challenging airway management user experience.



# PEDIATRIC AIRWAY MANAGEMENT

The AirSim Child X is designed to simulate a 6-year-old and facilitates various procedures, including endotracheal/nasotracheal intubation, nasogastric (NG) tube insertion, bag-valve mask (BVM) ventilation, and supraglottic device insertion.

It features a tongue edema simulation and offers feedback on lung expansion and stomach inflation, making it ideal for beginner training in pediatric airway management. This model aids students in navigating the unique anatomy and procedures specific to pediatric care.

*"Intubation is critical in emergency and ICU settings, used for about 1.5 million patients each year in the U.S."*

Weiss, M., & Engelhardt, T. (2012)

## AirSim Child X

Product Code: AC10006X



[Click Here](#)

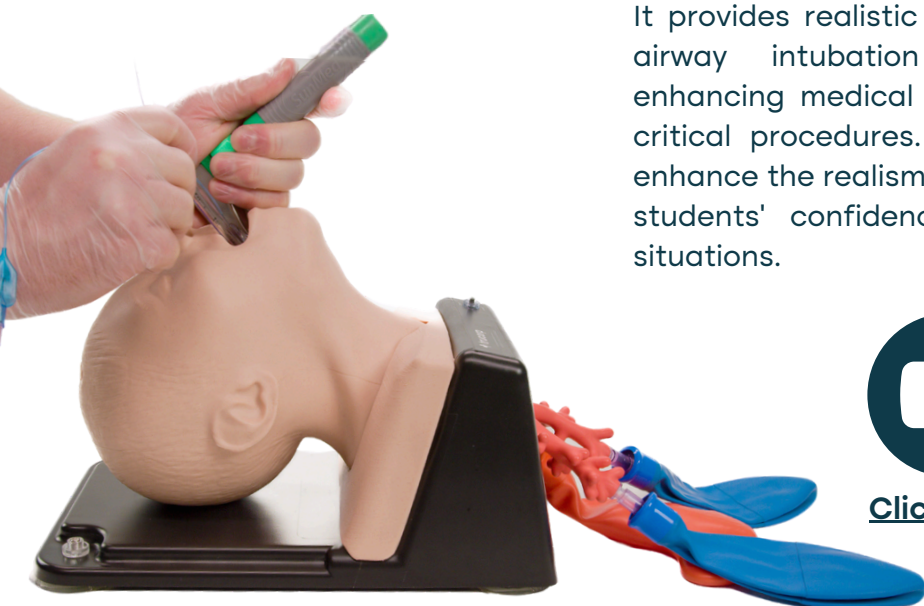


## AirSim Child Bronchi X

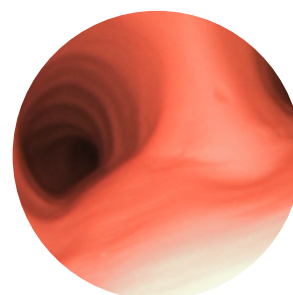
Product Code: AC50006X

The AirSim Child Bronchi X is designed for pediatric airway management and bronchoscopy techniques, showcasing anatomically precise bronchi extending to the fourth generation.

It provides realistic training experiences for pediatric airway intubation and bronchoscopy, thereby enhancing medical trainees' comprehension of these critical procedures. The intricate anatomical details enhance the realism of simulations, ultimately fostering students' confidence and skill for actual medical situations.



[Click Here](#)





## AirSim Child Combo X

Product Code: CC10006X



The AirSim Child Combo X expands on the Child X model by incorporating emergency airway procedures like needle and surgical cricothyroidotomy and percutaneous tracheostomy, alongside routine airway techniques such as intubation, NG tube insertion, and BVM ventilation.

It allows students to practice both regular and emergency pediatric airway management, making it suitable for comprehensive pediatric training.



[Click Here](#)

The AirSim Child Combo Bronchi X combines the features of the Child Combo X model with detailed bronchi anatomy, allowing for training in both emergency airway procedures and advanced bronchoscopy.

This model provides the most complete training experience for students, covering both complex pediatric airway management and bronchoscopy techniques.

## AirSim Child Combo Bronchi X

Product Code: CC50006X



[Click Here](#)



# INFANT AIRWAY MANAGEMENT

The AirSim Baby X is designed for training in infant airway management, based on the anatomy of a 5-month-old.

It supports oral and nasal intubation, bag/mask ventilation, and laryngeal mask airway (LMA) insertion, with real-time feedback on lung expansion and stomach inflation.

With a durable design supporting over 80,000 intubation cycles, it is ideal for students learning beginner infant airway management techniques.

## **AirSim Baby X**

Product Code: JR10001X

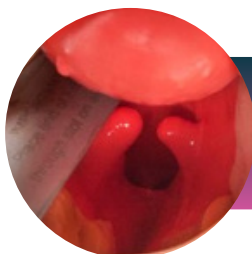


**Click Here**



## **AirSim Pierre Robin X**

Product Code: PR10000X



Developed in collaboration with  
clinicians from Children's  
Hospital Los Angeles

The AirSim Pierre Robin X is specially designed for training on infants with Pierre Robin Sequence, featuring congenital defects such as mandibular hypoplasia, glossoptosis, and cleft palate.

It supports double nasotracheal intubation, endotracheal tube insertion, and BVM ventilation, allowing students to practice managing difficult airway scenarios in infants with congenital conditions.



**Click Here**



The TruBaby range offers a comprehensive set of training tools designed to simulate the realistic anatomy and skills required in pediatric care.

TruBaby X provides more advanced capabilities, including lumbar puncture, needle thoracentesis, and chest drain procedures, making it suited for critical emergency and advanced pediatric life support training.

On the other hand, TruBaby X Lite is ideal for nursing-focused training, covering essential skills like airway management, CPR, peripheral venous cannulation, and intraosseous access, making it perfect for foundational pediatric care programs.

Both models replicate the appearance, weight, and movement of a 5-month-old infant, enabling lifelike practice across a wide range of medical procedures. This range ensures versatility, aiding students and professionals in honing their skills in both basic and advanced pediatric scenarios.



[Click Here](#)

## TruBaby X

Product Code: TB10001X



[Click Here](#)

## TruBaby X Lite

Product Code: TBL10001X



### skills comparison

	trubaby x lite	trubaby x
Airway management	✓	✓
Peripheral venous cannulation	✓	✓
Urethral catheterisation (male and female)	✓	✓
CPR	✓	✓
IO Tibia	✓	✓
Intramuscular injection	✓	✓
Lumbar puncture		✓
Needle thoracentesis		✓
Chest drain		✓

The TruInfant IV Arm is a realistic training model designed for practicing peripheral IV cannulation in infants.

Based on a 5-month-old, it features lifelike resistance, blood flashback, and multiple venous sites, offering an authentic hands-on experience. It's easy to set up, durable (over 300 needle penetrations), and has interchangeable arms for prolonged use.

Ideal for healthcare professionals and students, it helps develop confidence in pediatric IV access skills safely and effectively.



NEW

## TruInfant IV Arm

Product Code: TINIVARM1



[Click Here](#)



## TruInfant IO Leg

Product Code: TINIOLEG1

NEW



[Click Here](#)



The TruInfant IO Leg is a realistic training model based on a 5-month-old infant, designed for practicing critical pediatric skills, including tibia intraosseous (IO), IV cannulation, and intramuscular injections.

Key features include lifelike anatomy with realistic resistance, simulated blood flow feedback, and multiple venous sites for comprehensive training. The model is easy to set up, durable (5 procedures per IO insert and other areas over 250 penetrations), and has replaceable parts for extended use.

Ideal for pediatric healthcare professionals and trainees, it helps enhance confidence and precision in infant IO, IV, and IM techniques.



*"In about 10-15% of emergencies, IV access fails, and IO access becomes a critical intervention."*

Brenner, T., Bernhard, M., & Helm, M. (2009)



The TruMan Trauma Adult is an advanced, durable trauma simulator designed to provide realistic training for airway management and trauma procedures. It features capabilities for oral and nasal intubation, needle and surgical cricothyroidotomy, percutaneous tracheostomy, and CPR, supported by the highly durable AirSim X airway, certified for over 80,000 intubation cycles.

Trainees can practice tension pneumothorax management with realistic feedback, palpate anatomical landmarks, and perform chest drain procedures - all with lifelike simulation and user feedback. Ideal for medical educators and trainees, the TruMan Trauma Adult X is a cost-effective solution that ensures hands-on experience with crucial emergency techniques, helping healthcare professionals enhance their skills and confidence.



## **TruMan Trauma Adult**

Product Code: TTR2000X

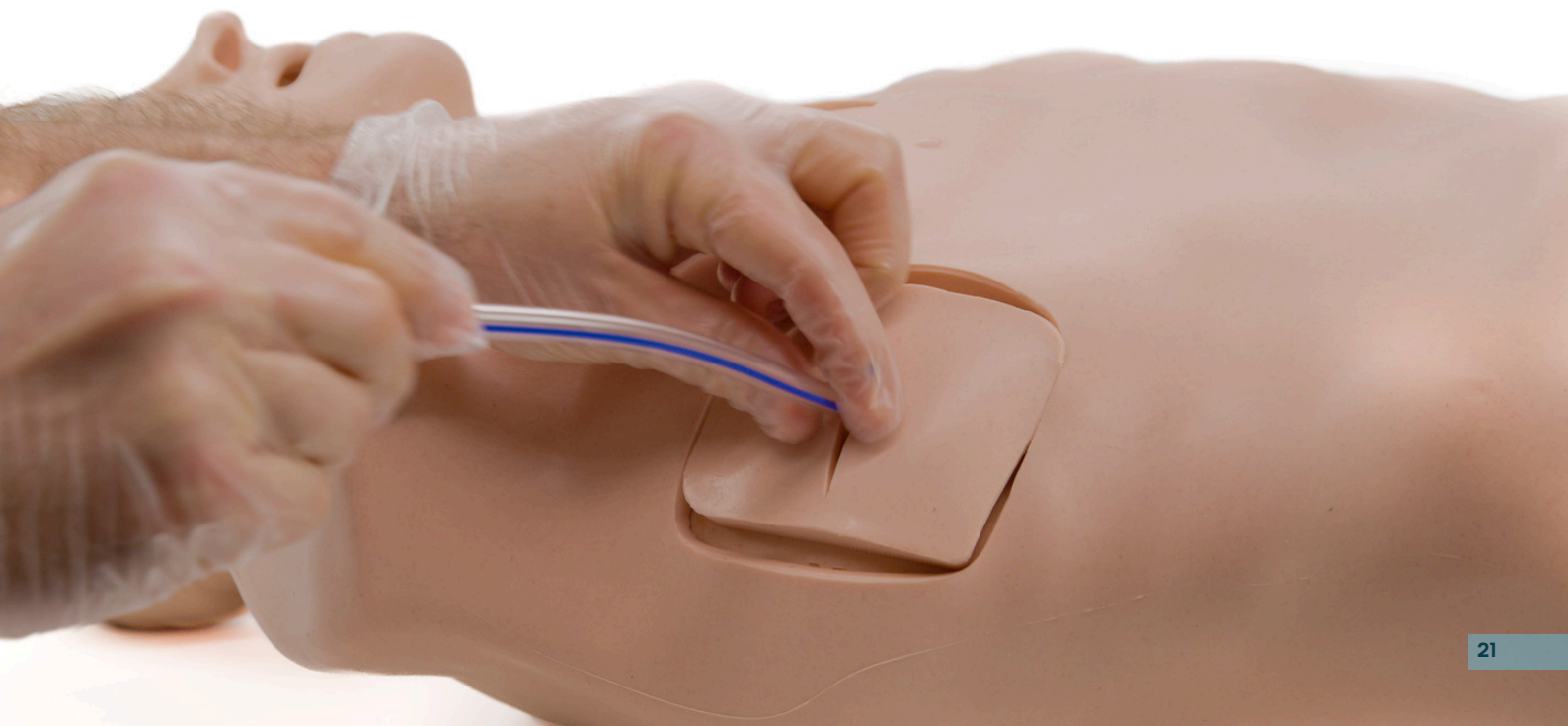


[Click Here](#)



*"Improperly placed chest tubes can lead to significant complications, including organ injury. A study found that complication rates of chest tube insertion can be reduced from 30% to 10% with adequate training."*

Brenner, T., Bernhard, M., & Helm, M. (2009)



## TruTourniquet

Product Code: TTQ1000



The TruTourniquet is a realistic above-knee blast injury trainer designed for massive haemorrhage control. Featuring a bleeding point, fractured femur, and visual feedback for correct tourniquet application.

Easy to set up in under five minutes and suitable for classroom or field use, the TruTourniquet is ideal for emergency response training, handling over 40,000 uses without fail.



[Click Here](#)

The TruWound is a gunshot wound trainer featuring a pressurized blood system to simulate realistic arterial bleeding. Trainees practice wound packing with instant visual feedback on correct pressure.

Designed for classroom environments, it supports up to three wounds simultaneously with minimal mess, providing durable, hands-on training in haemorrhage control.

## TruWound

Product Code: TWO1000



[Click Here](#)



The TruCVC Central Venous Catheter Trainer is an advanced simulator designed for teaching best practices in central venous catheter insertion using ultrasound guidance.

Featuring anatomically correct vascular structures such as the internal jugular and subclavian veins, this trainer enables realistic practice of needle insertion, catheter placement, and Seldinger techniques.

The innovative TruUltra material is durable and self-healing, capable of over 1,000 needle punctures and 40+ full catheter insertions, with up to 90% of needle tracks disappearing from ultrasound imaging after 24 hours—ensuring efficient and cost-effective use.

**TruCVC**

Product Code: TCVC100



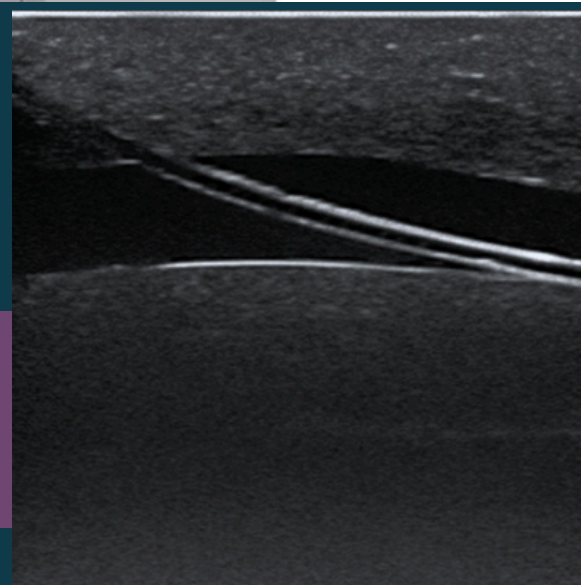
[Click Here](#)



*"Training on ultrasound-guided procedures can improve accuracy and reduce errors by over 40%."*

*[Troianos, C.A., et al. \(2011\)](#)*

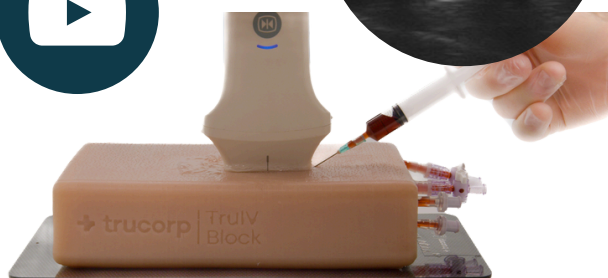
Ideal for medical students and healthcare professionals, TruCVC is quick to set up, compatible with all ultrasound machines, and offers a hands-on approach to mastering essential vascular access skills.





## TruIV Block

Product Code: TIV100



The TruIV Block is a realistic and durable IV cannulation trainer featuring eight superficial and deep veins (4-8mm) for ultrasound-guided practice.

Made from TruUltra self-regenerating material, it allows up to 4,000 needle penetrations with lifelike vascular "tenting" and fascia layers.

The TruIV Block is ideal for medical students and healthcare professionals to develop essential IV insertion skills.

The TruNerve Block is an ultrasound training model ideal for regional anaesthesia and IV cannulation.

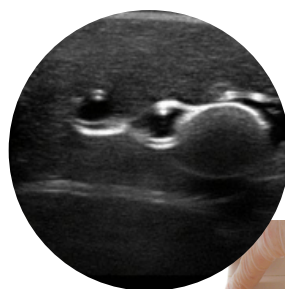
Featuring realistic anatomy with embedded vessels, a nerve bundle, and a fractured bone, it provides lifelike feedback like vascular "tenting" and blood flashback.

The TruUltra material supports up to 1,000 needle penetrations, ensuring durability for repeated practice.

Ideal for anaesthesiologists or emergency medicine physicians for continual training or medical trainees.

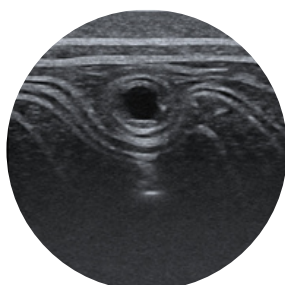
## TruNerve Block

Product Code: TNB110



## TruPICC

Product Code:  
TPICC100



The TruPICC IV Training Arm is a realistic model for ultrasound-guided PICC line insertion and IV cannulation training.

It features anatomically accurate veins and arteries, including the superior vena cava for catheter placement verification.

Made from durable TruUltra material, it supports up to 800 needle punctures for repeated practice.

Ideal for oncologists, nurse practitioners and vascular specialists, it offers lifelike vascular "tenting" and blood withdrawal, ensuring effective training in essential vascular access skills.



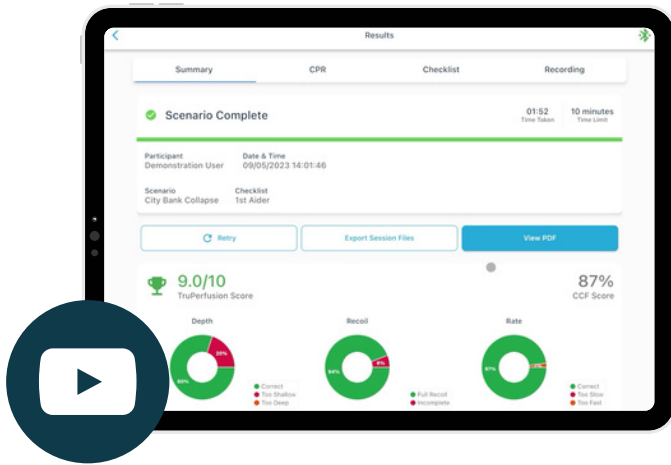
## truAED

TruAED is an interactive AED training app designed for realistic CPR practice with Laerdal QCPR manikins.

It offers hands-on training with real-time feedback, customizable scenarios, video debrief, and AI-powered performance assessments.

Suitable for first responders, healthcare professionals, medical students, and workplace safety trainers, TruAED helps users master life-saving skills through accessible, self-directed or instructor-led learning modes.

It boosts accuracy and confidence, making it an ideal tool for effective preparation in cardiac emergencies.

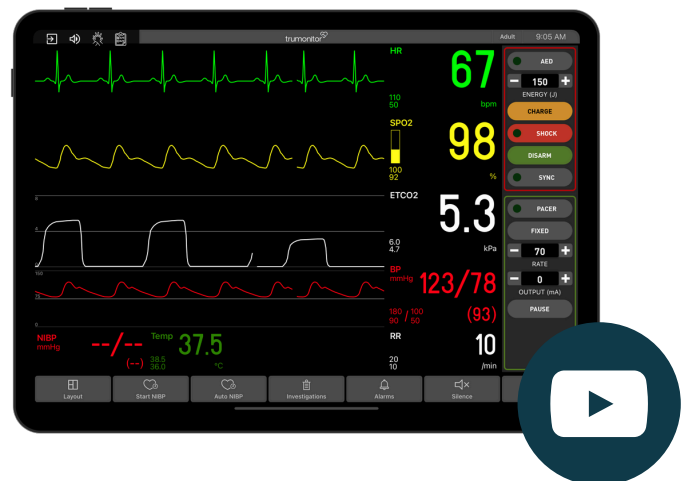


TruMonitor is a portable patient monitoring simulation app that replicates real clinical settings.

It features customizable scenarios, realistic vital sign monitoring (ECG, SpO2, NIBP), and supports both adult and pediatric modes.

With training accessible on iOS and Android tablets, it is ideal for medical students, EMTs, paramedics, nurses, and doctors. TruMonitor enhances critical thinking, teamwork, and decision-making skills through interactive learning scenarios and real-time instructor control, helping healthcare professionals prepare effectively for real-life emergencies.

## trumonitor



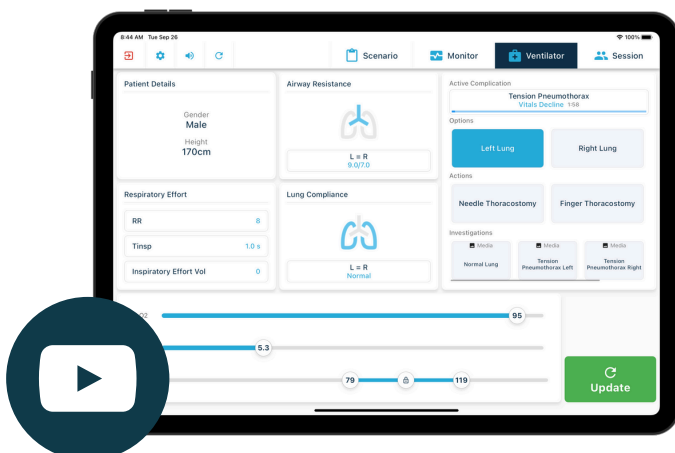
## truvent

TruVent is an advanced ventilator simulation app designed for hands-on training in mechanical ventilation for both adult and pediatric patients.

It features realistic controls, customizable scenarios, and real-time feedback, accessible on iOS and Android devices.

Suitable for respiratory therapists, critical care nurses, anesthesiologists, medical students, and healthcare institutions.

TruVent helps users master ventilation management, build critical skills, and gain practical experience in a risk-free environment.



The TruJunctional is a specialized training manikin designed to replicate critical lower body trauma scenarios for medical professionals and first responders.

Featuring realistic anatomical landmarks such as the anterior superior iliac spine, pubic symphysis, and greater trochanters, which provide an accurate simulation environment for practicing pelvic binding, junctional tourniquet placement, and the treatment of traumatic injuries, including stab wounds, entry and exit gunshot wounds.

It is compatible with a range of medical devices like SAM Sling, Pelvic Binder, CAT Tourniquet, SAM Junctional Tourniquet, and JETT, making it ideal for military medics, paramedics, EMTs, and healthcare professionals to improve skills, confidence, and efficiency in managing complex trauma in high-stakes environments.

## TruJunctional

Product Code: TJU1000

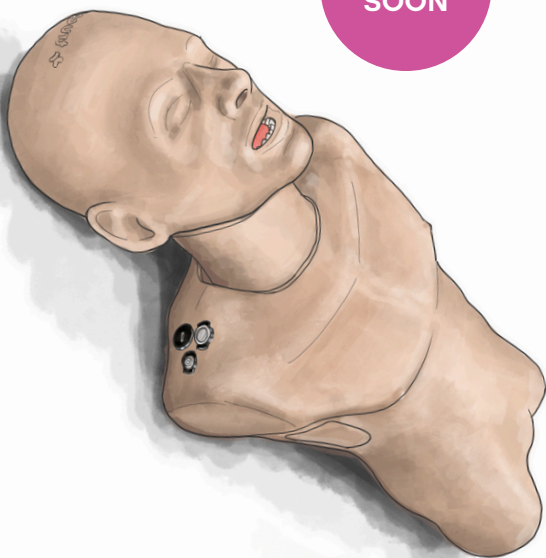
NEW



## Smart TruMan Trauma Adult

Product Code: TTP1000X

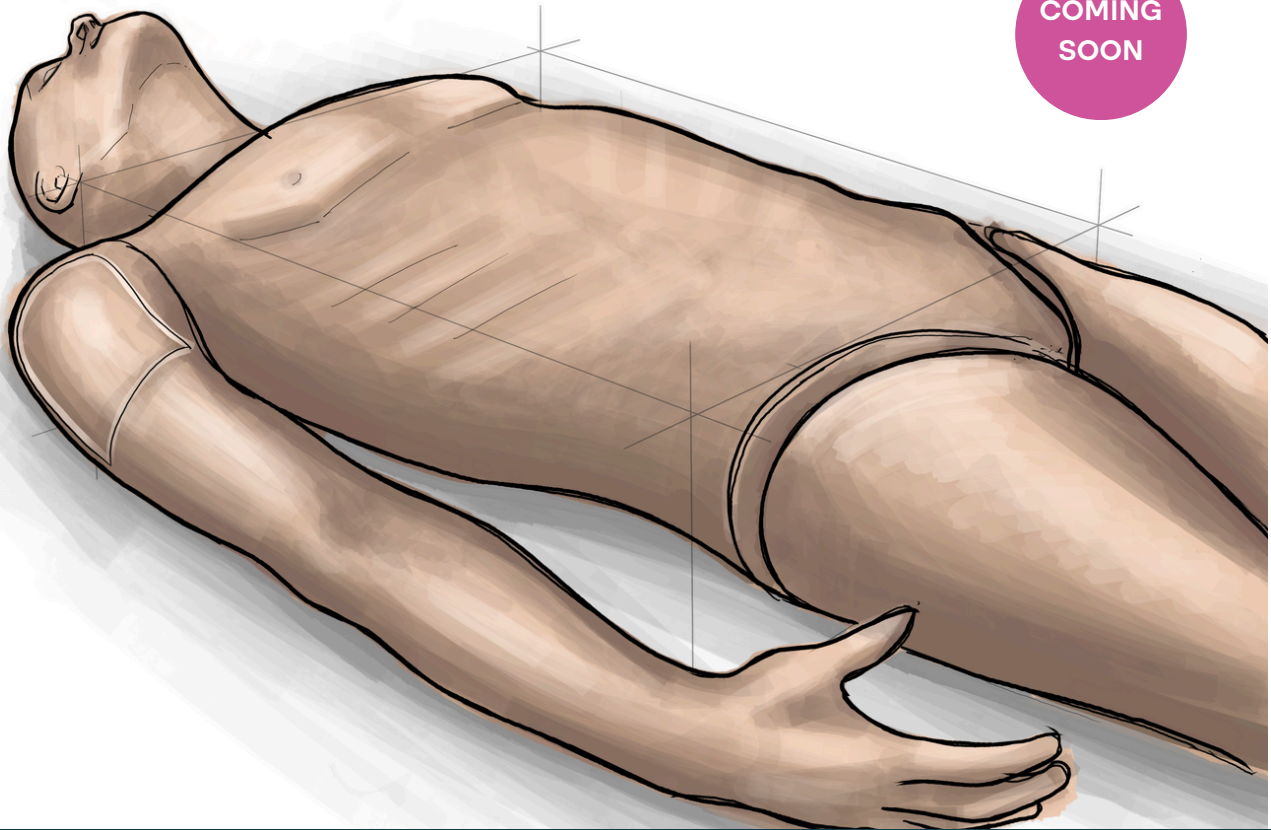
COMING  
SOON



The Smart TruMan Trauma Adult is an advanced trauma manikin ideal for intensive training, particularly suited for paramedics, emergency responders, trauma care teams, and military medics.

It features real-time CPR feedback on depth, rate, and hand position through an integrated app, ensuring precise technique during practice. The manikin also supports a range of critical procedures, including tongue edema, cricothyroidotomy, endotracheal intubation, nasogastric intubation, needle decompression in the 2nd and 5th intercostal spaces, chest drain insertion (with ultrasound simulated images for detection of pneumothorax or haemothorax), lung isolation, stomach distension, and pelvic binding.

With quick assembly, portability, and seamless app integration for detailed performance tracking and feedback, the Smart TruMan Trauma Adult provides a realistic, comprehensive training experience for high-stakes trauma and CPR scenarios.

COMING  
SOON

The TruALS is a high-fidelity, full-body advanced life support (ALS) manikin designed for intensive training, ideal for healthcare providers, emergency responders, and military medics.

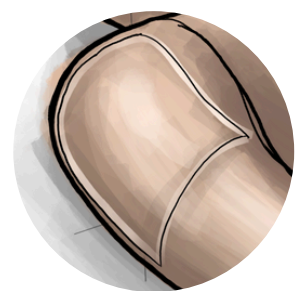
It features a detailed head task trainer supporting advanced airway management, including endotracheal and nasogastric intubation, along with real-time ventilation monitoring through smart sensors. High-quality CPR feedback on compression depth, rate, recoil, and hand positioning ensures adherence to guidelines, with performance data available for precise training outcomes.

Equipped with vital signs monitoring, TruALS includes a monitor bag with leads for 12-lead ECG, enabling cardiac assessment and training on diverse rhythms. Essential procedures, such as needle decompression in the 2nd and 5th intercostal spaces, humeral and tibial IO access, and IV/IM administration, enhance hands-on skills. Flexible joints allow realistic alignment and full-body positioning for various procedures, replicating human range of motion.

With interchangeable limbs and head, TruALS offers versatility and customizable training scenarios. The TruSim app provides integrated, app-based performance tracking, delivering real-time feedback on CPR, airway, and critical interventions, making TruALS a valuable, comprehensive training tool for mastering life-saving techniques in high-stakes scenarios.

## TruALS Adult

Product Code:  
TALS1000



# adult procedural abilities

	<u>AirSim</u>	<u>AirSim Bronchi</u>	<u>AirSim Advance X</u>	<u>AirSim Advance Bronchi X</u>	<u>AirSim Combo X</u>	<u>AirSim Combo Bronchi X</u>	<u>AirSim Difficult Airway</u>	<u>AirSim Difficult Airway with Bronchi</u>	<u>Smart Airway Adult</u>
Endotracheal / Nasotracheal Intubation	X	X	X	X	X	X	X	X	X
Nasogastric (NG) Tube Insertion	X	X	X	X	X	X	X	X	X
Bag-Valve Mask (BVM) Ventilation	X	X	X	X	X	X	X	X	X
Supraglottic Device Insertion	X	X	X	X	X	X	X	X	X
Combi Tube Insertion	X	X	X	X	X	X	X	X	X
Direct & Video Laryngoscopy	X	X	X	X	X	X	X	X	X
Awake Fibre Optic Examination	X	X	X	X	X	X	X	X	X
Needle & Surgical Cricothyroidotomy					X	X	X	X	X
Percutaneous Tracheostomy					X	X	X	X	X
Diagnostic Bronchoscopy		X		X		X		X	
Lung Isolation & Suctioning Techniques		X		X		X		X	
Laryngospasm							X	X	
Tongue Edema	X	X	X	X	X	X	X	X	X
Trismus							X	X	
Receding / Protruding Mandible							X	X	
Neck Lock / Head Rotation Restriction							X	X	
Advanced procedure metrics tracking									X
Scenario variability & customised assessments									X
Real-time feedback via app									X

# pediatric procedural abilities

	<u>AirSim Child X</u>	<u>AirSim Child Bronchi X</u>	<u>AirSim Child Combo X</u>	<u>AirSim Child Combo Bronchi X</u>	<u>AirSim Baby X</u>	<u>AirSim Pierre Robin X</u>	<u>Smart Airway Child</u>	<u>Smart Airway Baby</u>
Endotracheal / Nasotracheal Intubation	X	X	X	X	X	X	X	X
Nasogastric (NG) Tube Insertion	X	X	X	X	X	X	X	X
Bag-Valve Mask (BVM) Ventilation	X	X	X	X	X	X	X	X
Supraglottic Device Insertion	X	X	X	X	X	X	X	X
Combi Tube Insertion	X	X	X	X	X	X	X	X
Direct & Video Laryngoscopy	X	X	X	X	X	X	X	X
Awake Fibre Optic Examination	X	X	X	X	X	X	X	X
Needle & Surgical Cricothyroidotomy			X	X			X	
Percutaneous Tracheostomy			X	X			X	
Diagnostic Bronchoscopy		X		X				
Lung Isolation & Suctioning Techniques		X		X				
Tongue Edema	X	X	X	X			X	X
Significant Mandibular Hypoplasia						X		
Glossoptosis						X		
Cleft Palate						X		
Bifid Uvula						X		
Advanced procedure metrics tracking							X	X
Scenario variability & customised assessments							X	X
Real-time feedback via app							X	X



# general information

## Dark skin tones

Dark skin tones are available on all TruCorp manikins and products.

To purchase a dark skin tone, please add 'DS' to the end of the product code, for example an AirSim Advance X with dark skin tone would be 'AA91100XDS'.

## Delivery

Our standard delivery time is 3-4 weeks from receipt of purchase order, however we will endeavour to deliver sooner if possible.

TruCorp products are carefully designed and produced at our UK HQ.

## Warranty

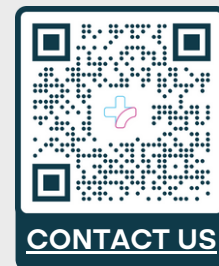
For more information on product warranty, please visit the below webpage.

Warranty applies to all products which have been used appropriately as noted in the [product user guide](#).

More details: <https://trucorp.com/en/warranty/>

## Contact us

Complete a submission form on our [contact us page](#) for more information on a product, quotes or local distributors.



## References

[Hierlmeier B, Prem A, Anand S, Lerant A, Ostrovsky G. Management of Malpositioned Double-Lumen Tubes: A Simulation-Based Training Exercise for Anesthesiology Residents. International Medical Education. 2022; 1\(1\):4-10.](#)

[Ost, D., DeRosiers, A., Britt, E. J., Fein, A. M., Lesser, M. L., & Mehta, A. C. \(2001\). Assessment of a bronchoscopy simulator. American journal of respiratory and critical care medicine, 164\(12\), 2248–2255.](#)

Weiss, M., & Engelhardt, T. (2012). "Paediatric airway management: current practices and controversies." \*Journal of the American Society of Anesthesiologists\*.

Brenner, T., Bernhard, M., & Helm, M. (2009). \*Trauma\*.

[Troianos, C.A., et al. \(2011\) - Guidelines for Performing Ultrasound Guided Vascular Cannulation: Recommendations of the American Society of Echocardiography and the Society of Cardiovascular Anesthesiologists](#)

**TruCorp Ltd**  
33 Waringstown Road,  
Lurgan, Co. Armagh,  
BT66 7HH, UK

Main Line: +44 (0)28 3888 2714  
Web: www.trucorp.com  
Email: info@trucorp.com

© 2025 TruCorp Ltd. All rights reserved. No part of this publication may be reproduced, stored, transmitted or disseminated, in any form, or by any means, without prior written permission from TruCorp Ltd.

All information correct at time of going to press.

